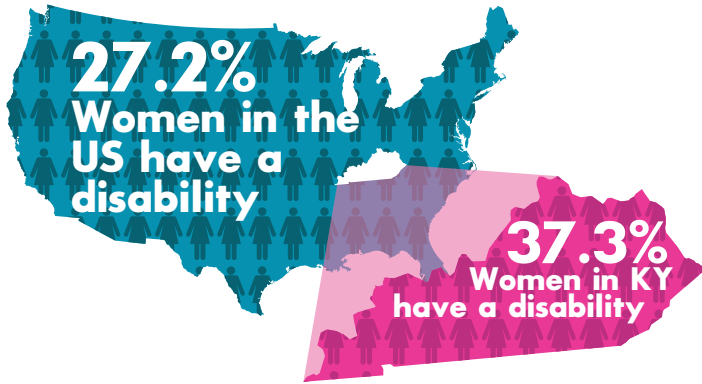
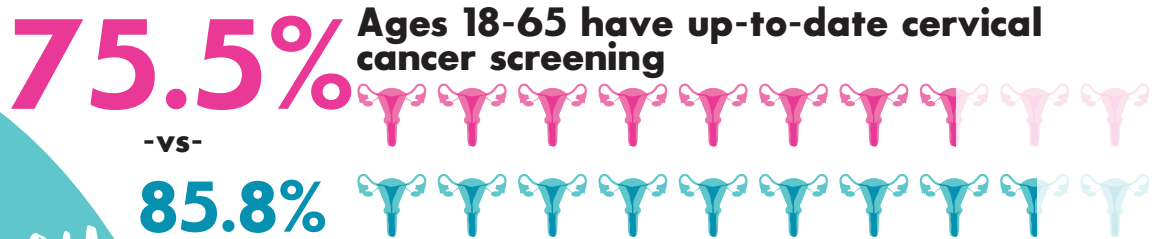


Kentucky Disability & Women's Health



Women with disabilities experience health disparities putting them at a higher risk of developing cancer compared to women without disabilities.

Financial and environmental barriers prevent them from receiving routine breast and cervical cancer screenings.



Did you know?

11.9%
Have had some form of cancer (excluding skin cancer)

-vs-

6.6%

Most forms of cancer are treatable if caught early



17.5%

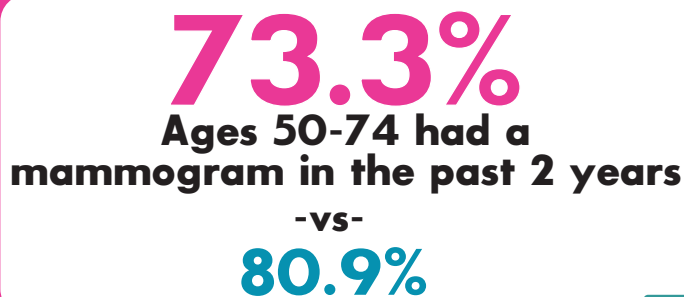
Could not see a doctor in past year due to cost

-vs-

11.6%

KEY

- With a disability
- Without a disability



Kentucky
Women's
Cancer Screening Program

For more info, visit wellness4ky.org/womens-health

Kentucky
Inclusive
Health
Collaborative