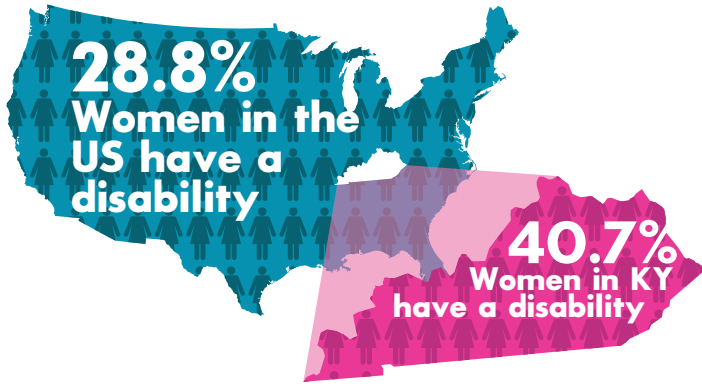
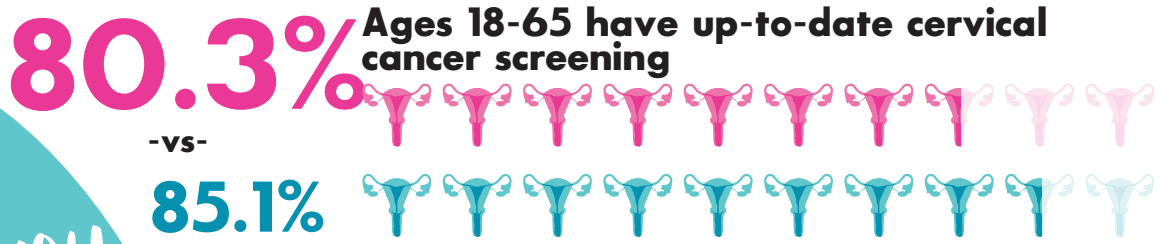


# Kentucky Disability & Women's Health



Women with disabilities experience health disparities putting them at a higher risk of developing cancer compared to women without disabilities.

Financial and environmental barriers prevent them from receiving routine breast and cervical cancer screenings.



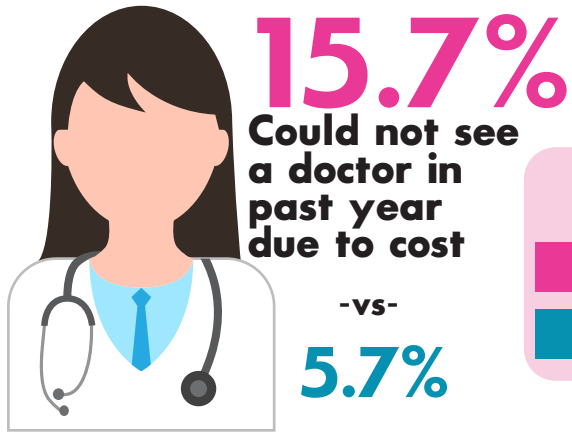
Did you know?

**9.3%**  
Have had some form of cancer (excluding skin cancer)

-vs-

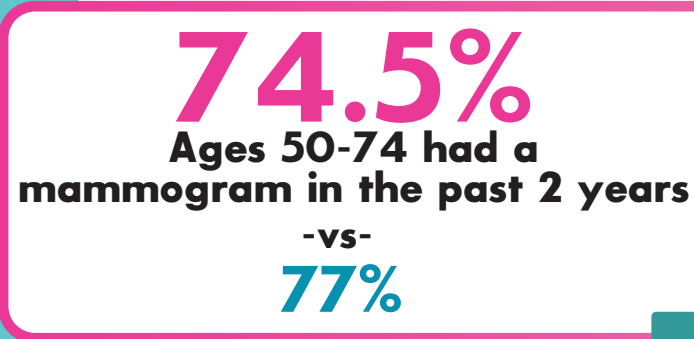
**4.6%**

Most forms of cancer are treatable if caught early



**KEY**

- With a disability
- Without a disability



For more info, visit [wellness4ky.org/womens-health](http://wellness4ky.org/womens-health)



\*(BRFSS, 2020, 2021) (CDC Disability & Health Data System)