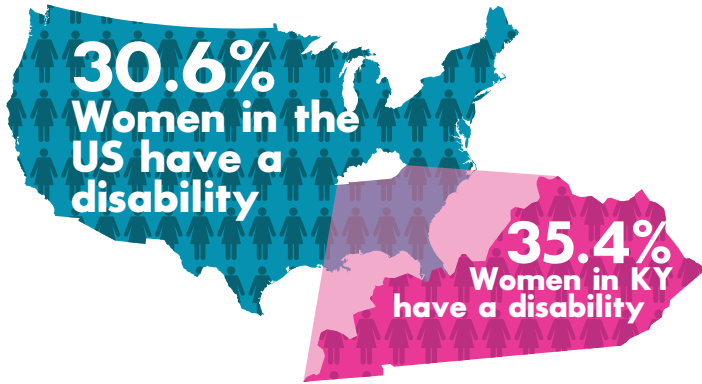
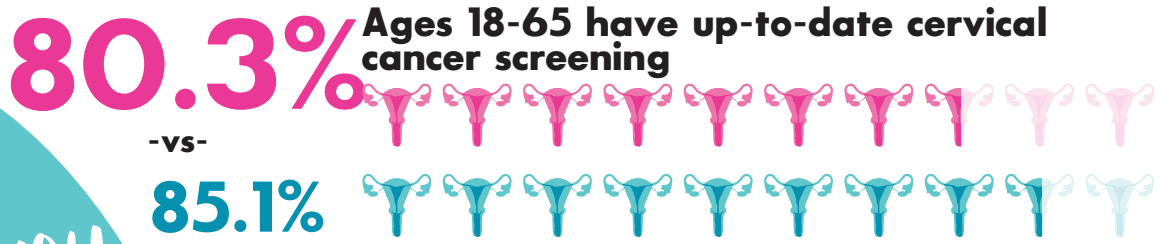


Kentucky Disability & Women's Health



Women with disabilities experience health disparities putting them at a higher risk of developing cancer compared to women without disabilities.

Financial and environmental barriers prevent them from receiving routine breast and cervical cancer screenings.



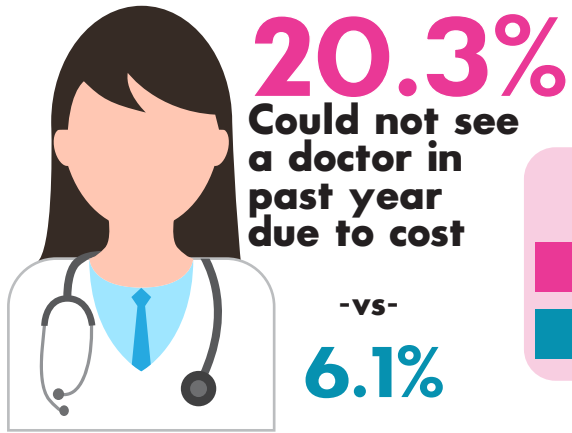
Did you know?

8.2%
Have had some form of cancer (excluding skin cancer)

-vs-

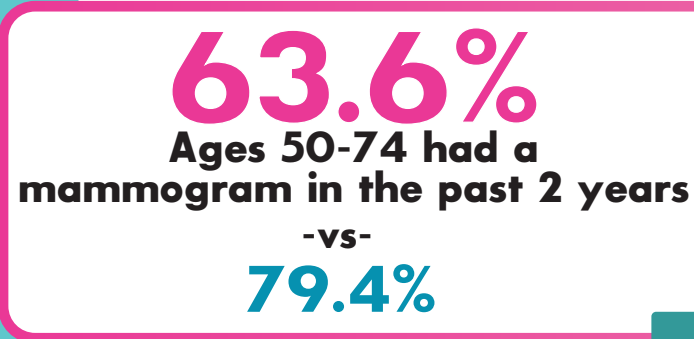
5.6%

Most forms of cancer are treatable if caught early



KEY

- With a disability
- Without a disability



For more info, visit wellness4ky.org/womens-health



*(BRFSS, 2024) (CDC Disability & Health Data System)