

# KENTUCKY DISABILITY & SMOKING RATES

## FACTS & DANGERS

**34.3%**

Adults in Kentucky have some type of disability\*

BRFSS 2024

**24.6%**

Kentuckians with disabilities are current smokers vs

**13.5%** KY population who smoke

**11.9%**

US population who smoke

**Tried to quit smoking in the past 12 months**

**42.9%**

**35.9%**

### KEY

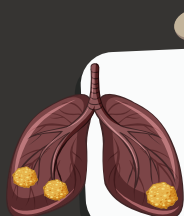


With a Disability



Without a Disability

Kentuckians with disabilities have a higher risk of cancer, heart disease and stroke.



**Cancer**

**8.2%**

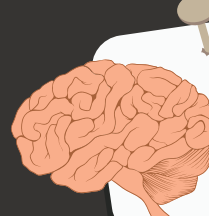
**5.6%**



**Heart Disease**

**12.2%**

**5.1%**



**Stroke**

**6.4%**

**2.3%**



**E-CIG use**

**20.5%**

**13.5%**

**ASTHMA**

**18.2%**

**7.6%**

**COPD**

**19%**

**4.9%**



Community Health Education & Exercise Resources

[wellness4ky.org](http://wellness4ky.org)