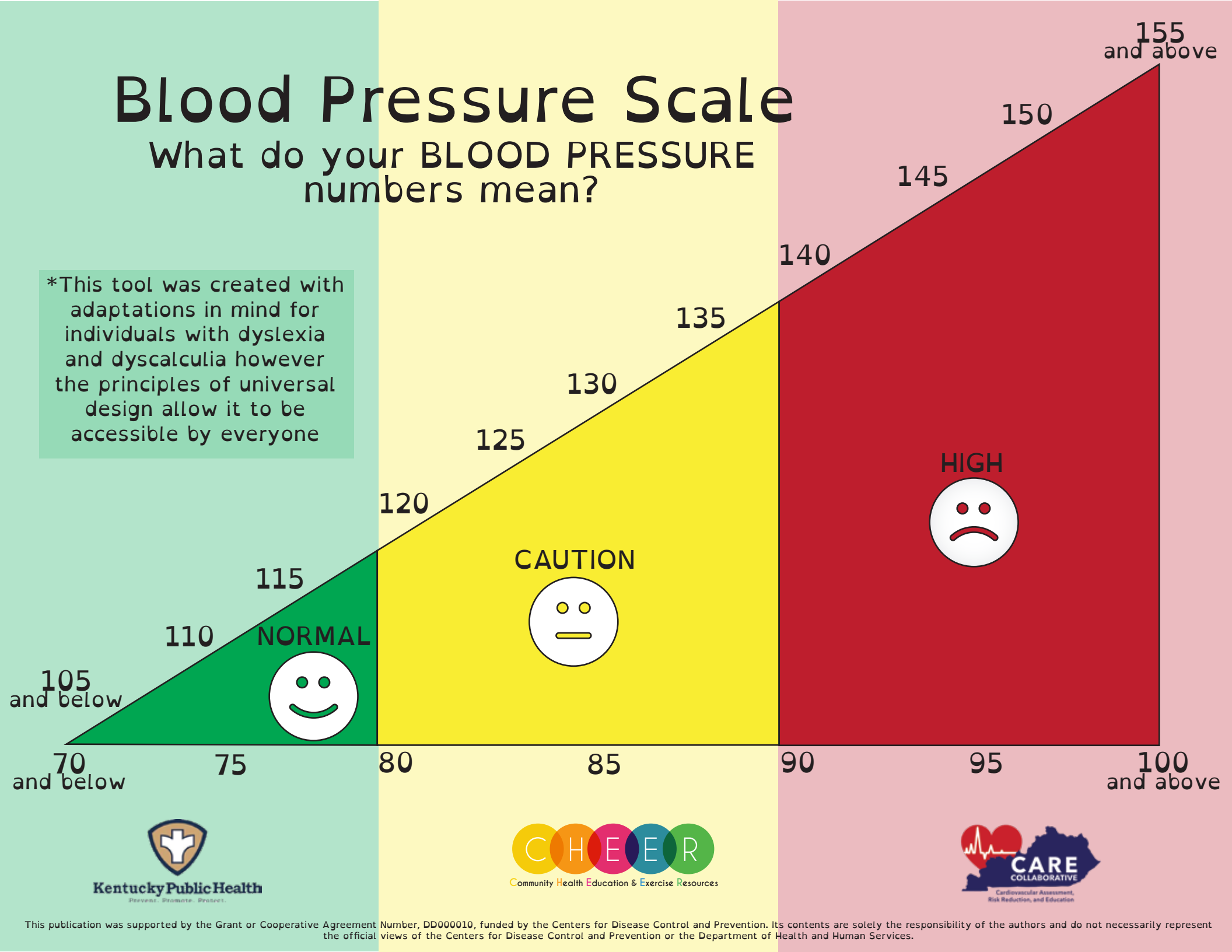


Blood Pressure Scale

What do your BLOOD PRESSURE numbers mean?

*This tool was created with adaptations in mind for individuals with dyslexia and dyscalculia however the principles of universal design allow it to be accessible by everyone



Kentucky Public Health
Prevent. Promote. Prosper.



Community Health Education & Exercise Resources



Cardiovascular Assessment, Risk Reduction, and Education